



## Vestil Manufacturing Corp.

2999 North Wayne Street, P.O. Box 507, Angola, IN 46703

Telephone: (260) 665-7586 -or- Toll Free (800) 348-0868

Fax: (260) 665-1339

Web: [www.vestilmfg.com](http://www.vestilmfg.com) e-mail: [info@vestil.com](mailto:info@vestil.com)

### LLCB-202058 COUNTERBALANCED LIGHT LOAD LIFTER



#### Receiving Instructions

After delivery, remove the packaging from the product. Inspect the product closely to determine whether it sustained damage during transport. If damage is discovered, record a complete description of it on the bill of lading. If the product is undamaged, discard the packaging.

**NOTE:** The end-user is solely responsible for confirming that product design, use, and maintenance comply with laws, regulations, codes, and mandatory standards applied where the product is used.

#### Technical Service & Replacement Parts

For answers to questions not addressed in these instructions and to order replacement parts, labels, and accessories, call our Technical Service and Parts Department at (260) 665-7586. The Department can also be contacted online at <https://www.vestil.com/page-parts-request.php>.

#### Electronic Copies of Instruction Manuals

Additional copies of this instruction manual may be downloaded from <https://www.vestil.com/page-manuals.php>.

#### Table of Contents

	Page
Specifications.....	2
Signal Words.....	3
Safety Instructions.....	3
Exploded View & Bill of Materials.....	4
National Standards.....	5
Raising and Lowering the Platform.....	5
Using the Lifter.....	5 - 6
Record of Satisfactory Condition.....	6
Inspections & Maintenance.....	7
Labeling Diagram.....	7
Limited Warranty.....	8




## SPECIFICATIONS (21-006-062)

Specifications for LLCB-202058 counterbalanced light lifts are provided on Vestil's website. To access the appropriate specifications document, navigate to this webpage: <https://www.vestil.com/product.php?FID=263>. Click the "Product Specifications Table" tab. Scroll the page to the table row for model LLCB-202058 and click the button in the PDF column that looks like a pencil inside a box. A PDF document will open. This file is the specifications document. Print a copy of the drawing and keep it with your copy of this manual. The following is an exemplar copy of the specifications document that is current as of the publication date of this manual. If you have any questions about the specifications document, please contact the [TECHNICAL SERVICE](#) department.

COUNTER BALANCED LIGHT LOAD LIFT - LLCB-202058		APPROX WEIGHT: 510.52 lbs. DOES NOT INCLUDE WEIGHT OF POWER OR PACKAGING!!!									
***ANY ADDITIONS, DELETIONS, OR OMISSIONS MUST BE CORRECTED ON THIS DRAWING AS THIS DRAWING WILL BE CONSIDERED ALL INCLUSIVE***											
<p>ALL GRAPHICS PROVIDED ARE FOR REFERENCE ONLY. IF CERTAIN DIMENSIONS ARE CRITICAL PLEASE VERIFY THOSE DIMENSIONS WITH YOUR SALESPERSON</p>											
<p><b>STANDARD FEATURES</b></p> <p>MODEL NUMBER: LLCB-202058            CAPACITY: 300 LBS.            PLATFORM WIDTH: 20"            PLATFORM LENGTH: 20"            RAISED HEIGHT: 59"            LOWERED HEIGHT: 3 1/8"            OVERALL WIDTH: 27"            OVERALL LENGTH: 43 3/4"            OVERALL HEIGHT: 67 3/32"            HORIZONTAL LOAD CENTER: 10"            (2) Ø4" X 2" MR CASTER WHEEL            (2) Ø4" X 1 1/4" HR CASTER SWIVEL            TOUGH BAKED IN POWDER            COATED BLUE FINISH</p>											
<p><b>SPECIAL FEATURES</b></p> <p>NONE</p>											
<p>DIMENSION TOLERANCE ± 1/4"</p>											
<p>FOR INTERNAL USE ONLY PROJECT SIGN OFF</p> <table border="1"> <tr> <td>SALES</td> <td></td> </tr> <tr> <td>ENG.</td> <td></td> </tr> <tr> <td>FAB.</td> <td></td> </tr> <tr> <td>POWER</td> <td></td> </tr> </table>				SALES		ENG.		FAB.		POWER	
SALES											
ENG.											
FAB.											
POWER											
<p>I, THE UNDERSIGNED, AGREE THAT THE PRODUCT AS REPRESENTED SATISFIES DESIGN AND DIMENSION REQUIREMENTS. I ALSO ACKNOWLEDGE MY DUTY TO CONFIRM PRODUCT AND INSTALLATION COMPLIANCE WITH ALL APPLICABLE FEDERAL, STATE AND LOCAL REGULATIONS AND STANDARDS.</p> <p><b>ANY MODIFIED UNITS ARE NON-RETURNABLE</b></p> <p>[ ] As drawn [ ] As marked</p> <p>Signed: _____ Date: _____</p> <p>Printed Name: _____</p> <p>LEAD TIME WILL START UPON RECEIPT OF SIGNED APPROVAL DRAWING</p>											
<p>APPROVAL</p> <p>DISTRIBUTOR'S NAME: _____ P.O.# _____</p> <p>VESTIL MANUFACTURING W.O.# _____</p> <p>DRAWN BY: CRM DATE: 12/20/2010 SALES: X</p> <p>REFERENCE: X SCALE: 1:20 FILE NAME: _____</p> <p>QUOTED LEAD TIME: X QUOTE # X 21-007-062</p>											

## SIGNAL WORDS

This manual uses SIGNAL WORDS to indicate the likelihood of personal injuries, as well as the probable seriousness of those injuries, if the product is misused in the ways described. Other signal words call attention to uses of the product likely cause property damage. The following are signal words used in this manual and their definitions.

 <b>DANGER</b>	Identifies a hazardous situation which, if not avoided, <b>WILL</b> result in <b>DEATH</b> or <b>SERIOUS INJURY</b> . Use of this signal word is limited to the most extreme situations.
 <b>WARNING</b>	Identifies a hazardous situation which, if not avoided, <b>COULD</b> result in <b>DEATH</b> or <b>SERIOUS INJURY</b> .
 <b>CAUTION</b>	Indicates a hazardous situation which, if not avoided, <b>COULD</b> result in <b>MINOR</b> or <b>MODERATE</b> injury.
<b>NOTICE</b>	Identifies practices likely to result in product/property damage, such as operation that might damage the product.

## SAFETY INSTRUCTIONS

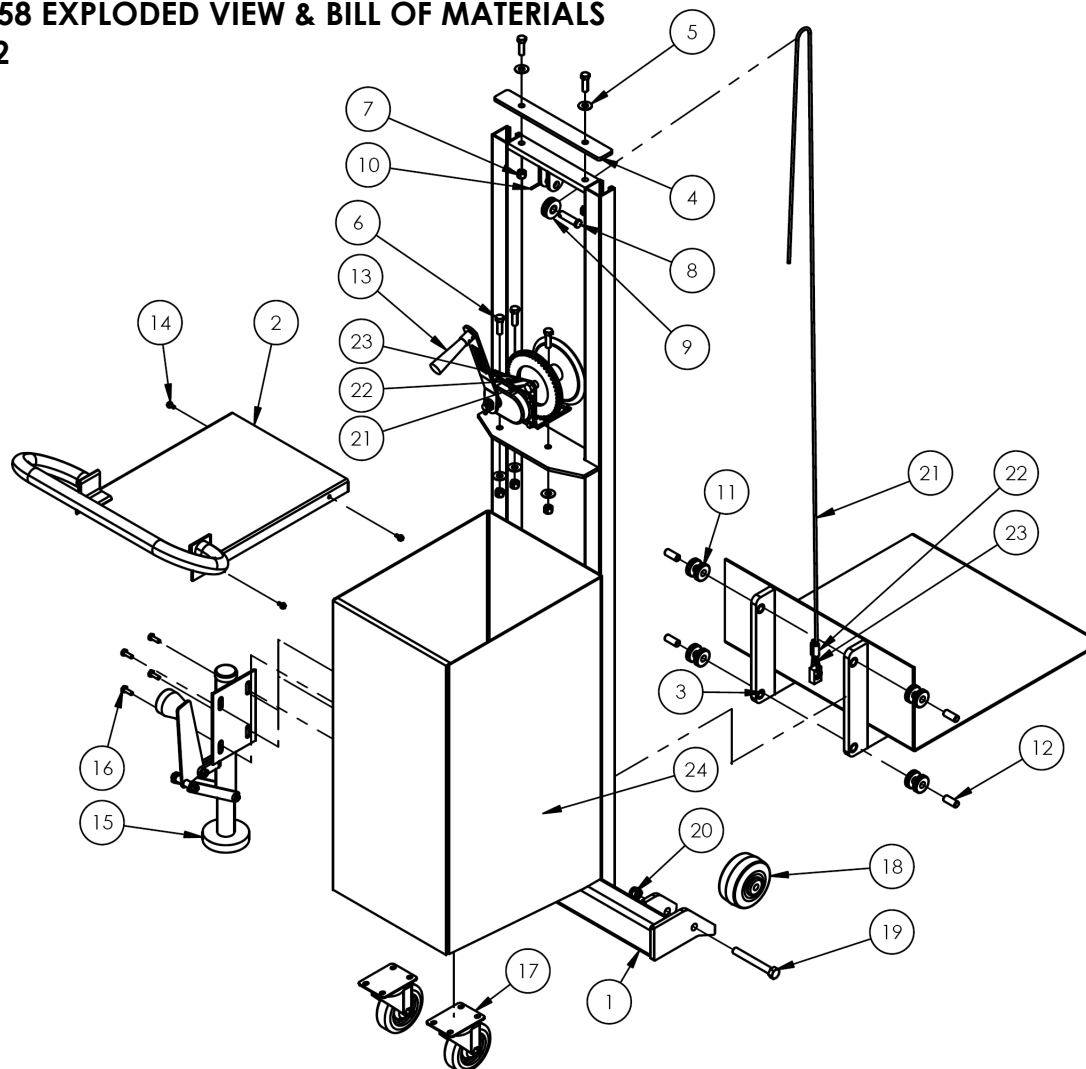
Vestil strives to identify foreseeable hazards associated with the use of its products. However, no manual can address every conceivable risk. The most effective way to avoid injury is to exercise sound judgment when assembling, using, inspecting, and maintaining this device.

### **WARNING**

Risks of serious personal injuries or death.

- **Read this manual in its entirety before assembling, using, inspecting or servicing the product.** Read the manual to refresh your understanding of use, inspection, and maintenance procedures as necessary. A copy of this manual should always be available to all persons who assemble, use, inspect and/or maintain this device.
- Inspect the lifter before each use following the [INSPECTIONS & MAINTENANCE](#) instructions provided on [p. 20](#). DO NOT use the lifter unless it is in satisfactory condition. See [RECORD OF SATISFACTORY CONDITION](#) on [p. 20](#).
- ALWAYS inspect the area where the lifter will be used before using it.
- Regardless of whether the lifter is loaded or unloaded, DO NOT stand or travel under the platform.
- Instruct others to stay clear of the device and the supported load during operation.
- Avoid contact with moving parts during operation. In particular, avoid contact with the cable, platform, wheels & rollers.
- DO NOT allow people to ride on the lifter.
- Failure to properly position a load on the platform might result in injury:
  1. DO NOT exceed the maximum rated load (capacity). The rated load appears on label 287 as shown in [LABELING DIAGRAM](#) on [p. 27](#). Also see applicable [SPECIFICATIONS](#) on [p. 2](#) or [3](#).
  2. ALWAYS center & evenly distribute the load. DO NOT handle off-center loads or loads that cannot be centered.
  3. Start & stop gradually to avoid upsetting the load on the platform. Strap loads to the platform if they might roll or slide.
  4. NEVER tilt the lifter while carrying a load. All wheels and casters must maintain contact with the ground when a load is on the platform.
- ALWAYS observe the platform while raising and lowering it. The platform should rise smoothly and evenly from side-to-side. Watch for binding or jerky movement and listen for unusual noises. Tag the unit "Out of order" and do not use it if you observe anything abnormal.
- Only use this lifter on even, level ground. DO NOT transport loads over inclines or stairs.
- Enlist a coworker to help you lift, load, and unload the unit whenever necessary.
- DO NOT perform maintenance on this product UNLESS it is unloaded and the platform is lowered. If the unit requires repairs, ONLY install manufacturer-approved replacement parts.
- Before leaving the unit unattended, unload it and lower the platform.
- DO NOT use the lifter UNLESS all labels are in place and readable. See [LABELING DIAGRAM](#) on [p. 27](#).
- DO NOT modify this product in any way. Modifying the lifter automatically voids the limited warranty and might make it unsafe to use.

# **LLCB-202058 EXPLODED VIEW & BILL OF MATERIALS** **21-006-062**



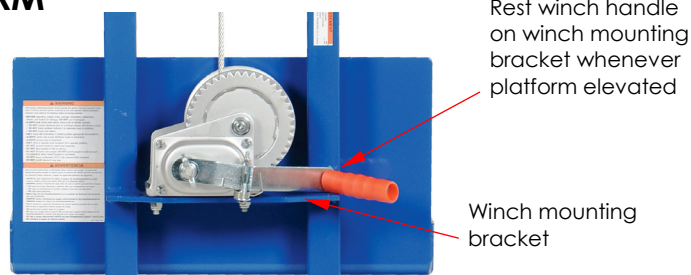
Item	Part no.	Description	Qty.	Item	Part no.	Description	Qty.
1	21-514-076	WELDMENT, FRAME	1	13	21-042-002-001	HAND WINCH, ONE PIECE STRAIGHT HANDLE GRIP	1
2	21-525-004	WELDMENT, COVER HANDLE	1	14	31802	SCREW, SELF-TAPPING SCREW	4
3	21-513-002	WELDMENT, PLATFORM	1	15	16-132-081	FLOOR LOCK ASSEMBLY, LEFT MOUNT	1
4	21-017-016	BAR STIFFENER	1	16	11003	HEX BOLT, GRADE A, ZINC PLATED, 1/4-20 X 3/4"	4
5	33008	FLAT WASHER, LOW CARBON, USS, ZINC PLATED, 3/8"	5	17	16-132-196	4" POLY ON POLY SWIVEL CASTER	2
6	11107	HEX BOLT, GRADE A, ZINC FINISH, 3/8"-16 x 1-1/4"	5	18	16-132-011	4 x 2 MOLD ON RUBBER SWIVEL	2
7	37024	NYLON INSERT LOCK NUT, GRADE 2, ZINC FINISH, 3/8"-16	5	19	11219	BOLT, HEX HEAD, Ø 1/2 - 13 UNC X 4 LG	2
8	21-112-003	PIN, Ø1/2 X 1-15/16 LG RETAINING CLEVIS	1	20	37030	1/2"-13 NYLON INSERT LOCK NUT	2
9	21-527-001	SUB-ASSEMBLY, PULLEY W/BUSHING	1	21	21-145-014	SPECIALTY HARDWARE, Ø3/16" AIR CRAFT CABLE	1
10	65076	Ø1/8" X 1" COTTER PIN, Z-PLATED	1	22	99-145-067	COMPRESSION SLEEVE Ø3/16" X 1" LG	1
11	21-027-003	ROLLER, GUIDE	8	23	21-145-013	SPECIALTY HARDWARE, THIMBLE	1
12	21-112-002	PIN. ROLLER	4	24	15-014-039	FRAME, COUNTERWEIGHT	1

## NATIONAL STANDARDS

This product is a manually propelled high lift truck. The Industrial Truck Standards Development Foundation (ITSDF) publishes national standard ANSI/ITSDF B56.10 (the "Standard") on its website ([www.itsdf.org](http://www.itsdf.org)). The standard is freely downloadable at <http://www.itsdf.org/cue/b56-standards.html>. Before putting the unit into service, acquire a copy of the Standard and apply all recommendations in Part II: For the User. If instructions provided in this manual conflict with instructions in the Standard, then you should apply the instructions in the Standard. Vestil encourages you to immediately contact [TECHNICAL SERVICE](#) to report any differences between instructions in this manual and the Standard.

### RAISING AND LOWERING THE PLATFORM

To raise and lower the platform, the lifter is equipped with a manual winch. Raise the platform by rotating the handle clockwise. The platform rises ~1 inch with each rotation. Lower the platform by turning the handle counterclockwise. Lay the handle on the winch mounting bracket as shown when the platform is elevated.



### USING THE LIFTER

This product is a manually-propelled high lift truck of the sort describes in American national standard ANSI/ITSDF B56.10 ("B56.10" or the "Standard"). Vestil recommends that the owner of this product acquire a copy of the latest revision of B56.10, which is available at no cost through the ITSDF website ([www.itsdf.org](http://www.itsdf.org)). The copy, along with this manual, should be available to all persons who use this product. Instructions in this manual are meant to **complement** the information provided in *Part II – For the User* of the Standard.

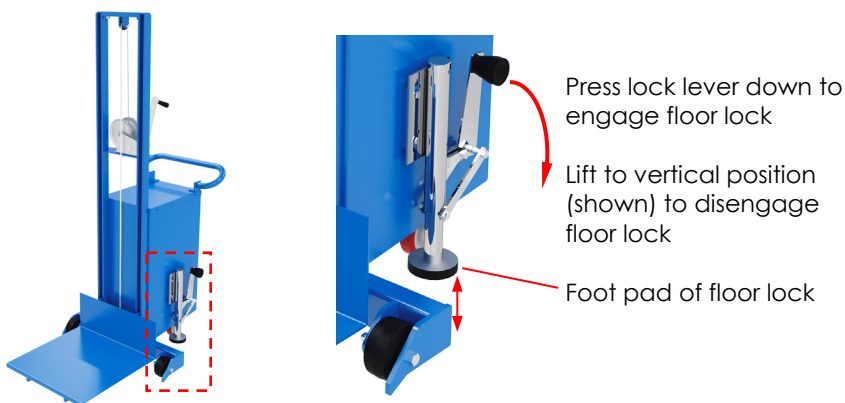
ONLY use this device after completing the operator training program in B56.10, sections 4.17 and 4.18.1-4.

- Develop safe working habits and an awareness of hazardous conditions occurring or present during operation of the lifter.
- Inspect the area where the lifter will be used **before each use** to identify unusual operating conditions. Implement additional safety precautions as conditions require. Conditions might include:
  1. Irregularities in the floor/surface.
  2. Debris or other obstructions on the floor/surface.
  3. Unsound surfaces or surfaces that cannot support your weight plus the weight of the lifter and a full capacity load.
- Perform the following **function test before each use**:
  1. Raise and lower the platform and confirm normal operating condition of the lift mechanisms.
  2. Test the casters/wheels: wheels should roll smoothly, should not be severely worn, and should be rigidly fastened to the frame of the lifter.

Use the lifter only if it is in [SATISFACTORY CONDITION](#). See [INSPECTIONS & MAINTENANCE](#), p. 7.

**Step 1:** Grasp the handle with both hands. Walk behind the lifter and keep your feet away from the wheels. ONLY use the lifter on even, level, concrete surfaces.

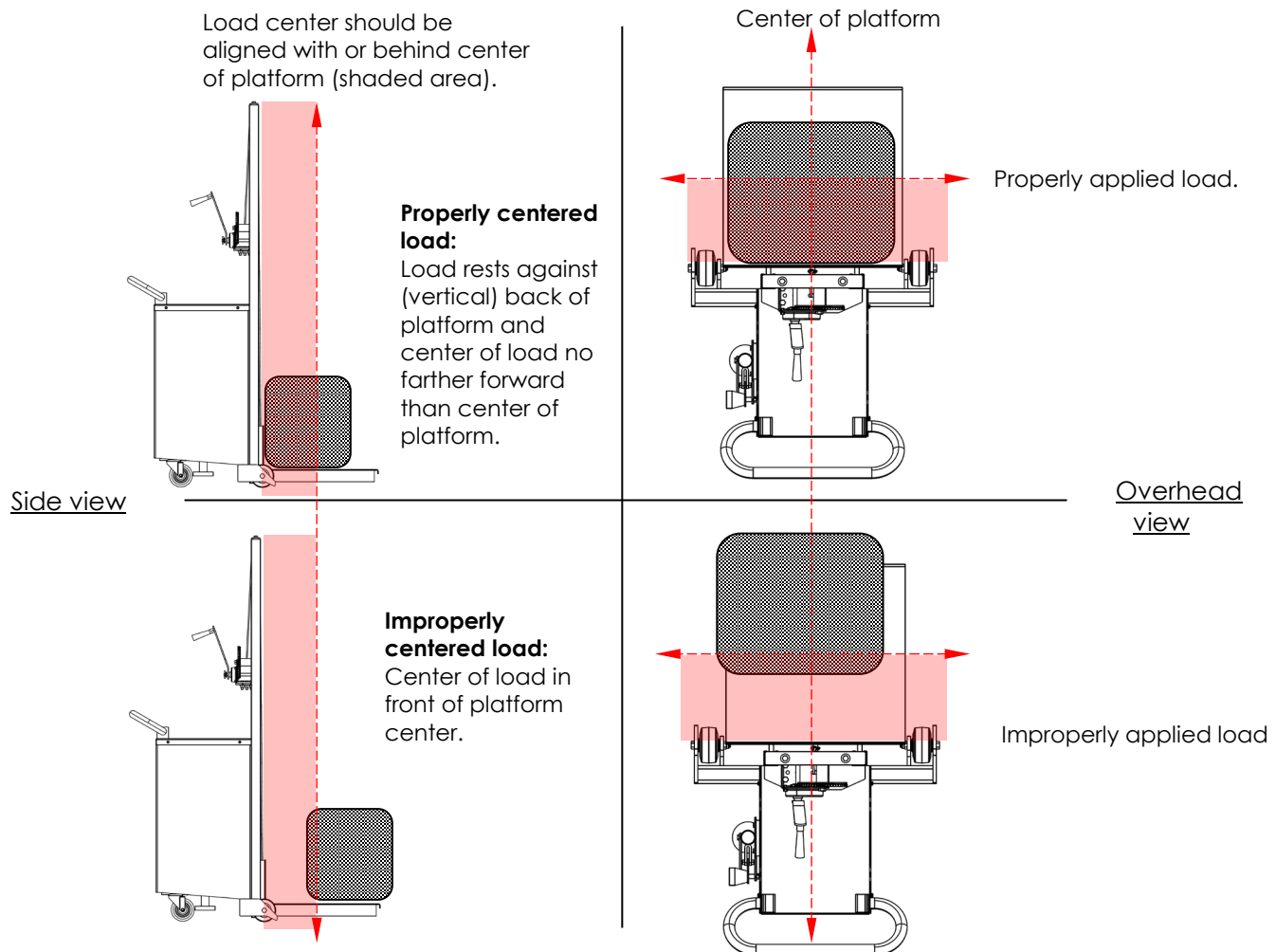
**Step 2:** Move the lifter to load. Apply the floor lock by firmly pressing down on the lock lever. Confirm that the foot pad of the floor lock solidly contacts the floor by trying to push the lifter. The lifter should resist forward/backward movement while the lock is applied. The floor lock will not prevent movement.





**Step 3:** Raise the platform to bring it to the level of the load. Turn the winch handle clockwise to raise the platform.

**Step 4:** Place the load on the platform. The load should rest against the vertical wall (the "back") of the platform. The center of the load should either align with the center of the platform or be behind it (see red shaded areas in diagrams below). Secure the load to the platform, for example with ratchet straps, to prevent sliding, rolling, etc.



**Step 5:** Lower the platform until it is just a few inches above the ground. Move the load and lifter by pushing on the operator handle. At the unloading destination:

- Lock the casters or set the brake or floor lock;
- Pump the foot pedal to raise the platform to a comfortable height; and
- Remove the load.

**Step 6:** Return the lifter to its storage location. Lower the platform. Engage the floor lock. Store the lifter in a dry, indoor location.

## RECORD OF SATISFACTORY CONDITION (THE "RECORD")

Record the condition of the lift truck before putting it into service. Thoroughly photograph the unit from multiple angles so that all operating mechanisms are clearly visible. Take close range photographs of the labels. Raise and lower the platform. Describe the operation of the winch. Describe sounds heard as the platform rises and descends. How much effort is required to turn the winch? Apply the floor lock. Photograph the floor lock. Try to move the truck with the floor lock applied and describe how the lock resists movement. Collect all photographs and writings in a single file. Give the file a name that clearly identifies it. This file is a record of the unit in satisfactory condition. Compare the findings of all inspections to the RECORD to determine whether the truck is in satisfactory condition. Purely cosmetic changes, like damaged paint/powder coat are not changes from satisfactory condition. However, touch-up paint to be applied to all affected areas as soon as damage occurs.





## LIMITED WARRANTY

Vestil Manufacturing Corporation ("Vestil") warrants this product to be free of defects in material and workmanship during the warranty period. Our warranty obligation is to provide a replacement for a defective, original part covered by the warranty after we receive a proper request from the Warrantee (you) for warranty service.

### Who may request service?

Only a warrantee may request service. You are a warrantee if you purchased the product from Vestil or from an authorized distributor AND Vestil has been fully paid.

### Definition of "original part"?

An original part is a part used to make the product as shipped to the Warrantee.

### What is a "proper request"?

A request for warranty service is proper if Vestil receives: 1) a photocopy of the Customer Invoice that displays the shipping date; AND 2) a written request for warranty service including your name and phone number. Send requests by one of the following methods:

<u>US Mail</u>	<u>Fax</u>	<u>Email</u>
Vestil Manufacturing Corporation 2999 North Wayne Street, PO Box 507 Angola, IN 46703	(260) 665-1339 <u>Phone</u> (260) 665-7586	<a href="mailto:info@vestil.com">info@vestil.com</a> Enter "Warranty service request" in subject field.

In the written request, list the parts believed to be defective and include the address where replacements should be delivered. After Vestil receives your request for warranty service, an authorized representative will contact you to determine whether your claim is covered by the warranty. Before providing warranty service, Vestil will require you to send the entire product, or just the defective part (or parts), to its facility in Angola, IN.

### What is covered under the warranty?

The warranty covers defects in the following original, dynamic parts: motors, hydraulic pumps, motor controllers, and cylinders. It also covers defects in original parts that wear under normal usage conditions ("wearing parts"), such as bearings, hoses, wheels, seals, brushes, and batteries.

### How long is the warranty period?

The warranty period for original dynamic components is 90 days. For wearing parts, the warranty period is 90 days. Both warranty periods begin on the date Vestil ships the product to the Warrantee. If the product was purchased from an authorized distributor, the periods begin when the distributor ships the product. Vestil may, at its sole discretion, extend a warranty period for products shipped from authorized distributors by up to 30 days to account for shipping time.

### If a defective part is covered by the warranty, what will Vestil do to correct the problem?

Vestil will provide an appropriate replacement for any covered part. An authorized representative of Vestil will contact you to discuss your claim.

### What is not covered by the warranty?

The Warrantee (you) is responsible for paying labor costs and freight costs to return the product to Vestil for warranty service.

### Events that automatically void this Limited Warranty.

- Misuse;
- Negligent assembly, installation, operation or repair;
- Installation/use in corrosive environments;
- Inadequate or improper maintenance;
- Damage sustained during shipping;
- Collisions or other accidents that damage the product;
- Unauthorized modifications: Do not modify the product IN ANY WAY without first receiving written authorization from Vestil.

### Do any other warranties apply to the product?

Vestil Manufacturing Corp. makes no other express warranties. All implied warranties are disclaimed to the extent allowed by law. Any implied warranty not disclaimed is limited in scope to the terms of this Limited Warranty. Vestil makes no warranty or representation that this product complies with any state or local design, performance, or safety code or standard. Noncompliance with any such code or standard is not a defect in material or workmanship.